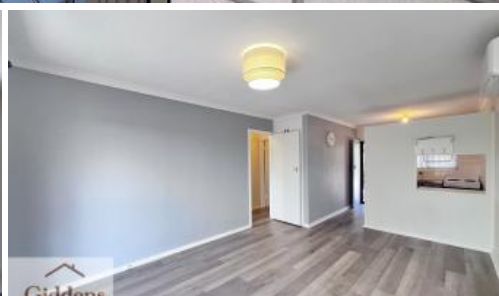
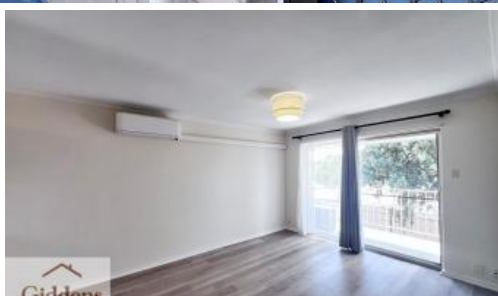
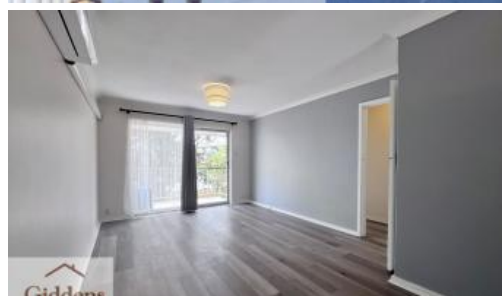


Leased



Unit 10, 252 Spencer Rd, Thornlie



Cute and Cosy 2 bedroom in Thornlie !

🛏 2 🚿 1 🚗 2

This low-maintenance apartment unit is positioned in a small, pleasant complex of twelve and features secure parking with electric gates at your entry, spacious grounds, and a communal laundry.

Price \$420 per week
Property Type Rental
Property ID 58

Features include:

- 2 x Queen sized bedrooms
- Renovated bathroom
- Brand new Hybrid flooring throughout
- Quality mesh screens to the front
- Open-plan living & dining area
- Practical kitchen
- Near new Reverse Cycle Air conditioner
- Balcony
- Linen cupboard storage

Agent Details

Ingrid Salazaar - 0451 953 690

Office Details

Giddens Realty
Unit 9a 64-66 Bannister Road
Canning Vale, WA, 6155 Australia
0451 953 690

Ideally located in a prime central Thornlie location just minutes away from Thornlie Train Station, and close to the Spencer Village with shops, a Pharmacy, fast food restaurants, as well as being within close proximity to Thornlie Primary school, library and a bus stop directly across the Road.

Thank you for viewing this property For Lease!

- Please bring a tape measure to properties if you need to measure any specific areas as second viewings are not always available.

Disclaimer: This description has been prepared for advertising and marketing purposes only. You must make your own independent investigations and rely on your own personal judgment about the information included in this advertisement as we provided this information without any implied warranty as to the accuracy or currency.

The above information provided has been furnished to us by the vendor/s. We have not verified whether or not that information is accurate and do not have any belief in one way or the other in its accuracy. We do not accept any responsibility to any person for its accuracy and do no more than pass it on. All interested parties should make and rely upon their own inquiries in order to determine whether or not this information is in fact accurate.

