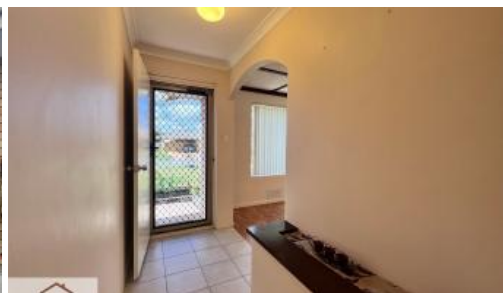


Leased



15 Sutcliffe Cl, Seville Grove



## Rear Access to Double Powered Workshop!

This rare find consists of a 3-bedroom home close to shops, local schools and Armadale Fitness and Aquatic Centre. It will suit someone who loves gardening and looking for a long-term property they can call Home. Save money with a working bore and solar panel included!

Features:

- 3 Bedrooms
- 1 semi-ensuite bathroom with a full-sized bath
- Large Formal Lounge and Dining rooms
- Good-sized Kitchen complete with dishwasher, lots of cupboard space and gas cooking.
- Ducted evaporative cooling
- Wood burner in the Family room
- Gas bayonets to the lounge and family
- Huge undercover alfresco with a bar
- Bore with full reticulated immaculate gardens

🚗 3 🚚 1 🚗 6

**Price** \$630 per week

**Property Type** Rental

**Property ID** 113

### Agent Details

Ingrid Sparkman - 0451 953 690

### Office Details

Giddens Realty  
Unit 9a 64-66 Bannister Road  
Canning Vale, WA, 6155 Australia  
0451 953 690

- Solar panels
- Immaculate gardens



Thank you for viewing this property For Lease!

- Please be careful if someone claiming to be the property owner contacts you directly to arrange a viewing, as there are several scams going on now and we would hate for you to become a victim.
- Please bring a tape measure to properties if you need to measure any specific areas as second viewings are not always available.

Disclaimer: This description has been prepared for advertising and marketing purposes only. You must make your own independent investigations and rely on your own personal judgment about the information included in this advertisement as we provided this information without any implied warranty as to the accuracy or currency.

The above information provided has been furnished to us by the vendor/s. We have not verified whether or not that information is accurate and do not have any belief in one way or the other in its accuracy. We do not accept any responsibility to any person for its accuracy and do no more than pass it on. All interested parties should make and rely upon their own inquiries in order to determine whether or not this information is in fact accurate.